

NARA Research Summary— Combined

▼ 1890

- **30 December**—Letter to engineer, 1st LH District, to use \$50 in funds for travel to inspect various locations for proposed lighthouses, including Spring Point.
Disk 2, RG26E23–DSCN1591

▼ 1891

- **2 April**—Letter from Chmn. of Committee on Location, USN, to LH Board recommending that a 5th order light be funded at Spring Point Ledge.
Disk 2, Letterbooks, Vol. 951–DSCN0620
- **20 April**—Letter to 1st LH District engineer informing him that the LH Board had recommended the establishment of a light at Spring Point Ledge.
Disk 2, RG26E23–DSCN1592

▼ 1892

- **21 April**—Letter from master of steamer *Penobscot* calling the LH Board's attention to a new bell buoy manufactured in Bangor requesting the buoy be given a trial at Spring Point Ledge.
Disk 2, Letterbooks, Vol. 949–DSCN0621
- **29 April**—Request for test of new bell buoy submitted.
Disk 2, RG26E38–DSCN2677
- **9 May**—Request for establishment of bell buoy denied.
Disk 2, RG26E38–DSCN2677

▼ 1893

- **31 March**—Letter from 1st LH District inspector posting notice to mariners that spar buoy had been removed and replace with nun and can buoys for the summer season.
Disk 2, Letterbooks, Vol. 559–DSCN0619

▼ 1895

- **5 October**—Minutes of the Committee on Location approving the location of SPLH.
Disk 2, RG26E1– DSCN2835-2836
- **21 October**—Minutes of the Committee on Location approving sketch plan and estimates for SPLH and recommending preparation of detailed plans and specifications.
Disk 2, RG26E1–DSCN2837-2838

NARA Research Summary— Combined

- **21 October—Letter from LH Board to 1st LH District Engineer stating that the Attorney General feels that the letter of conveyance from the land agent of the State of Maine vested in the US a valid title to Spring Point Ledges for LH purposes.**
Disk 2, RG26E23–DSCN1611
- **21 October—Letter from LH Board to 1st LH District Engineer concurring with recommendation to establish light on SP Ledge.**
Disk 2, RG26E23–DSCN1612
- **9 November—Letter from LH Board to 1st LH District Engineer directing him to prepare detailed plans and specifications for SPLH.**
Disk 2, RG26E23–DSCN1613

▼ 1896

- **6 February—Letter returning plans and specifications to 1st LH District Engineer with some modifications for his consideration.**
Disk 2, RG26E23–DSCN1614
- **16 March—Letter from LH Board to 1st LH District Engineer approving new plans, with the exception of certain modifications. Authorized to print the necessary number of copies and submit a form of advertisement and the names of publications in which the ad is to be printed.**
Disk 2, RG26E23–DSCN1615
- **19 March—150 copies of plans and specs to be printed**
Disk 2, RG26E23–DSCN1617-1621
- **25 March—Letter authorizing 1st LH District Engineer to accept a certain bid for printing of plans and specs.**
Disk 2, RG26E23–DSCN1622
- **30 March—Letter authorizing 1st LH District Engineer to publish advertisements for bids in specified newspapers.**
Disk 2, RG26E23–DSCN1623
- **8 May—Letter from LH Board to 1st LH District Engineer accepting the bid of Thomas Dwyer of NY in the sum of \$27,490 and authorizing the Engineer to enter into a contract with Dwyer for construction.**
Disk 2, RG26E23–DSCN1624/DSCN1625
- **4 June—Letter appointing John H Rostock as Inspector for construction of SPLH and requesting authority for his employment.**
Disk 2, RG26E23–DSCN1626

NARA Research Summary— Combined

- **10 June**—Letter from LH Board to 1st LH District Engineer authorizing employment of Rostock at a salary of \$125/mo. to take effect 18 June 1896.
Disk 2, RG26E23–DSCN1627
- **29 June**—Letter from LH Board to 1st LH District Engineer authorizing Inspector's travel to PA to inspect the metal work for SPLH.
Disk 2, RG26E23–DSCN1628-1631
- **16 September**—Letter authorizing LH Engineer to send Master Mechanic to PA to inspect metal work.
Disk 2, RG26E23–DSCN1632
- **6 October**—Letter authorizing LH Engineer to hire boatman and mechanic approved.
Disk 2, RG26E23–DSCN1633
- **2 November**—Letter from LH Board to 1st LH District Engineer to hire a diver, assistant, and apparatus for \$105 to inspect cylinder, concrete, and ledge.
Disk 2, RG26E23–DSCN1636
- **5 November**—Letter from LH Board to 1st LH District Engineer telling him not to allow the contractor to use materials that have not be tested and shown to be within specifications. Also noted that if Engineer did not deem it expedient to have material already used removed, then to submit his recommendations as to action to be taken.
Disk 2, RG26E23–DSCN1637
- **14 November**—Letter from LH Board to 1st LH District Engineer accepting his recommendation that the suspect cement be allowed to remain if the contractor agrees to a sufficient forfeit from the amount of the contract price. Engineer is to request further instructions from Board before additional payments to contractor are made.
Disk 2, RG26E23–DSCN1642
- **23 November**—LH engineer authorized to travel to PA to inspect metal work.
Disk 2, RG26E23–DSCN1644-1646

▼ 1897

- **2 January**—Letter from LH Board to 1st LH District Engineer requesting recommendation of adjustment to be made for inferior cement before first payment to contractor.
Disk 2, RG26E23–DSCN1647-1648
- **6 January**—Letter from LH Board to 1st District Engineer asking if first payment should be made in full, if adjustment for inferior cement is made upon final payment.
Disk 2, RG26E23–DSCN1649
- **7 January**—Letter from LH Board to 1st LH District Engineer again denying Dwyer's request for correspondence and reports related to cement and stating the government

NARA Research Summary— Combined

should avoid becoming involved in any way in the suit between the contractor and others.

Disk 2, RG26E23–DSCN1650

- **11 January**—Letter from LH Board to 1st LH District Engineer denying request from cement company for information and reports related to cement.
Disk 2, RG26E23–1651
- **16 January**—Pleading letter from Dwyer to Light House Board requesting payment for work completed to that point.
Disk 2, Letterbooks, Vol. 1159–DSCN0628/DSCN0629
- **21 January**—Letter received by lighthouse board from Justice Dept. solicitor requesting payment of first third of contract price Dwyer. Approved with stipulation that payment did not imply acceptance of the job.
Disk 2, Letterbooks, Vol. 1153–DSCN0630.jpg
- **23 January**—Letter from LH Board to 1st LH District Engineer authorizing payment to Dwyer of money owed for work so far.
Disk 2, RG26E23–DSCN1656
- **28 January**—Letter from LH Board to 1st LH District Engineer authorizing him to reserve sufficient funds (\$3200) for the lens and illuminating apparatus.
Disk 2, RG26E23–DSCN1658
- **3 February**—LH Board reply to 1st LH District Engineer stating that the question (presumably regarding the cement) will probably not be taken up by the Board until completion of the contract.
Disk 2, RG26E23–DSCN1660
- **16 February**—Letter from LH Board to 1st LH District Engineer asking when the illuminating apparatus will be sent and as to supplies required.
Disk 2, RG26E23–DSCN1661
- **26 February**—Letter requesting extension of contract from March 1, '97 to April 1 due to September '96 storm damage to cylinder. Approved.
Disk 2, Letterbooks, Vol. 1153–DSCN0632/DSCN0633/DSCN0634
- **26 February**—Letter from LH Board to 1st LH District Engineer authorizing purchase of Stevens fog bell apparatus, with additional funds to set it up at Boston Light Station for testing. Asking about results of testing of a newer alternate model.
Disk 2, RG26E23–DSCN1662
- **2 March**—Letter to 1st LH District Engineer authorizing extension of contract from 1 March 1897 to 1 April 1897.
Disk 2, RG26E23–DSCN1663-1664

NARA Research Summary— Combined

- **3 March—Letter to District Engineer approving installation of fog bell above railing on east side of watch room deck and the fog bell machine set up in the watch room. Characteristic set at double blow every twelve seconds.**
Disk 2, RG26E23–DSCN1665
- **3 March—Letter from Corp of Engineers to 1st LH District Engineer forwarding letter from cement company attorney containing questions pertaining to cement used by Dwyer in SPLH.**
Disk 2, RG26E23–DSCN1601-1602
- **5 March—Letter to District Engineer regarding his being interviewed by cement company attorney. District Engineer cautioned not to furnish evidence for the use of either party.**
Disk 2, RG26E23–DSCN1667
- **9 March—Letter transferring mate of *Myrtle* (W. A. Lane) to keeper of SPLH.**
Disk 2, RG26E38–DSCN2701
- **9 March—Letter appointing Harry Phillips as 1st Asst. Keeper.**
Disk 2, RG26E38–DSCN2701
- **22 March—Letter of transmittal of two copies of extension of contract to be delivered to Dwyer.**
Disk 2, RG26E23–DSCN1668
- **26 March—Letter to District Engineer authorizing installation of illuminating apparatus and fog bell machine by hired labor and for purchase of materials.**
Disk 2, RG26E23–DSCN1669
- **3 April—Letter acknowledging report of District Engineer that contractor has completed his work on SPLH with the exception of defects already reported. Requesting recommendation for method of settlement with contract**
Disk 2, RG26E23–DSCN1670-1671
- **6 April—Letter from LH Board to District Engineer requesting recommendation for equitable settlement with Dwyer.**
Disk 2, RG26E23–DSCN1672
- **8 April—Letter to lighthouse engineer authorizing acceptance of light house and to pay the amount due less \$300.**
Disk 2, RG26E23–DSCN1673-1678
- **5 May—Another letter denying cement company attorney's request for information.**
Disk 2, RG26E23–DSCN1679

NARA Research Summary— Combined

- **18 May—Letter from LH Board to District Engineer forwarding a copy of the Notice to Mariners regarding pending establishment of lighthouse at Spring Point on May 24, 1897.**
Disk 2, RG26E23–DSCN1680
- **21 May—Letter to District Engineer requesting clarification of proposed white sector.**
Disk 2, RG26E23–DSCN1681
- **25 May—Minutes of the Committee on Location stating that a letter from the 1st LH District inspector reporting the SPLH had been activated.**
Disk 2, RG26E1–DSCN2840
- **25 May—White sector reported working.**
Disk 2, RG26E38–DSCN2706
- **8 October—Letter of transmittal from Corps. of Engineers to LH Board forwarding letters recommending that the color of SPLH and Portland Breakwater light be changed.**
Disk 2, RG26E23–DSCN1599
- **14 October—Statement reporting Stevens fog bell striking apparatus in use.**
Disk 2, RG26E38–DSCN2709
- **21 October—Letter from cement company attorney requesting answers to 23 questions pertinent to their lawsuit against Dwyer.**
Disk 2, Letterbooks, Vol. 1217–DSCN0898-0902
- **23 October—Letter of transmittal in response to letter from attorney for cement company requesting information for a lawsuit against Dwyer. Referred to Livermore, Engineer, 1st Lighthouse District, Boston.**
Disk 2, Letterbooks, Vol. 1207–DSCN0905/DSCN0906/DSCN0907
- **26 October—Letter from LH Board accepting recommendation and approving change in color from red to white.**
Disk 2, RG26E23–DSCN1600
- **26 October—Copy of the lawsuit (amended complaint). Undated.**
Disk 2, Letterbooks, Vol. 1217–DSCN0903
- **6 November—Letter from Congressman Adams to Sec. of Treasury in support of RM Leslie.**
Disk 2, Letterbooks, Vol. 1207–DSCN0908
- **6 November—Letter from RM Leslie, president of the cement company, to Congressman Robert Adams, requesting assistance in obtaining information needed for lawsuit.**
Disk 2, Letterbooks, Vol. 1207–DSCN0909

NARA Research Summary— Combined

- **19 November**—Letter from Corps of Engineers to 1st LH District Engineer stating that, despite the assumption that the keepers would not be able to do the work of changing the lighthouse color from red to white themselves, they had done it.

Disk 2, RG26E23–DSCN1604

- **13 December**—Letter from cement company attorney to Light House Board requesting status of response to list of questions.

Disk 2, Letterbooks, Vol. 1217–DSCN0904

▼ 1898

- **17 February**—Letter from LH Board to 1st District LH engineer requesting he respond to cement company attorney's request for information.

Disk 2, RG26E23–DSCN1605

- **1 March**—Nomination, Harris Sumner Grant as Asst. Keeper, forwarded.

Disk 2, RG26E38–DSCN2713

- **22 March**—Letter from LH Board to 1st District LH engineer requesting he respond to cement company attorney's request for information.

Disk 2, RG26E23–DSCN1606

- **24 March**—Letter from LH Board to 1st District LH engineer acknowledging receipt of answers to cement company attorney's questions.

Disk 2, RG26E23–DSCN1607

- **28 March**—Letter from 1st LH District engineer to LH Board recommending copies of correspondence be given to cement company attorney, but not answers to his questions.

Disk 2, Letterbooks, Vol. 1209–DSCN0911-0912

- **6 April**—Letter from LH Board to 1st LH District engineer stating that copies of records requested by cement company attorney can only be released by Court order.

Disk 2, RG26E23–DSCN1608

- **26 July**—Letter from inspector, 1st LH District, to Lighthouse Board, that mines had been removed from Portland Harbor and Portland Head and Spring Point lights would be relighted after being shut down due to the harbor being mined.

Disk 2, Letterbooks, Vol. 1219–DSCN0914

- **26 July**—Telegram from inspector, 1st LH District to Lighthouse Board that SPLH would be relighted that night.

Disk 2, Letterbooks, Vol. 1219–DSCN0913

▼ 1900

NARA Research Summary— Combined

- **5 May**—Letter from 1st LH District engineer to LH Board noting that the lining of the lantern room with red glass was causing problems and recommending removal of all red glass except for the minimum necessary to define the white sector.
Disk 2, Letterbooks, Vol. 1283–DSCN0916-0917
- **6 June**—Letter concurring with 1st Lighthouse District recommendation that all red panes be removed from the lantern room with the exception of those necessary to define a red sector. Required District to furnish data for NOTAM.
Scan-140519_0014
Disk 2, RG26E23–DSCN1595-1596
- **25 July**—Letter regarding NOTAM that 1 September light characteristic would be changed.
Scan-140519_0013

▼ 1905

- **24 November**—Letter from LH Board to Inspector requesting information on height of station boats above water and any problems with waves.
Disk 2, RG26E48, File 2623–DSCN0201
- **29 November**—Letter to LH Board from Inspector describing position of station boats relative to water and waves, compared with problems at Portland Breakwater light with waves topping their pier.
Disk 2, RG26E48, File 2623–DSCN0199-0200

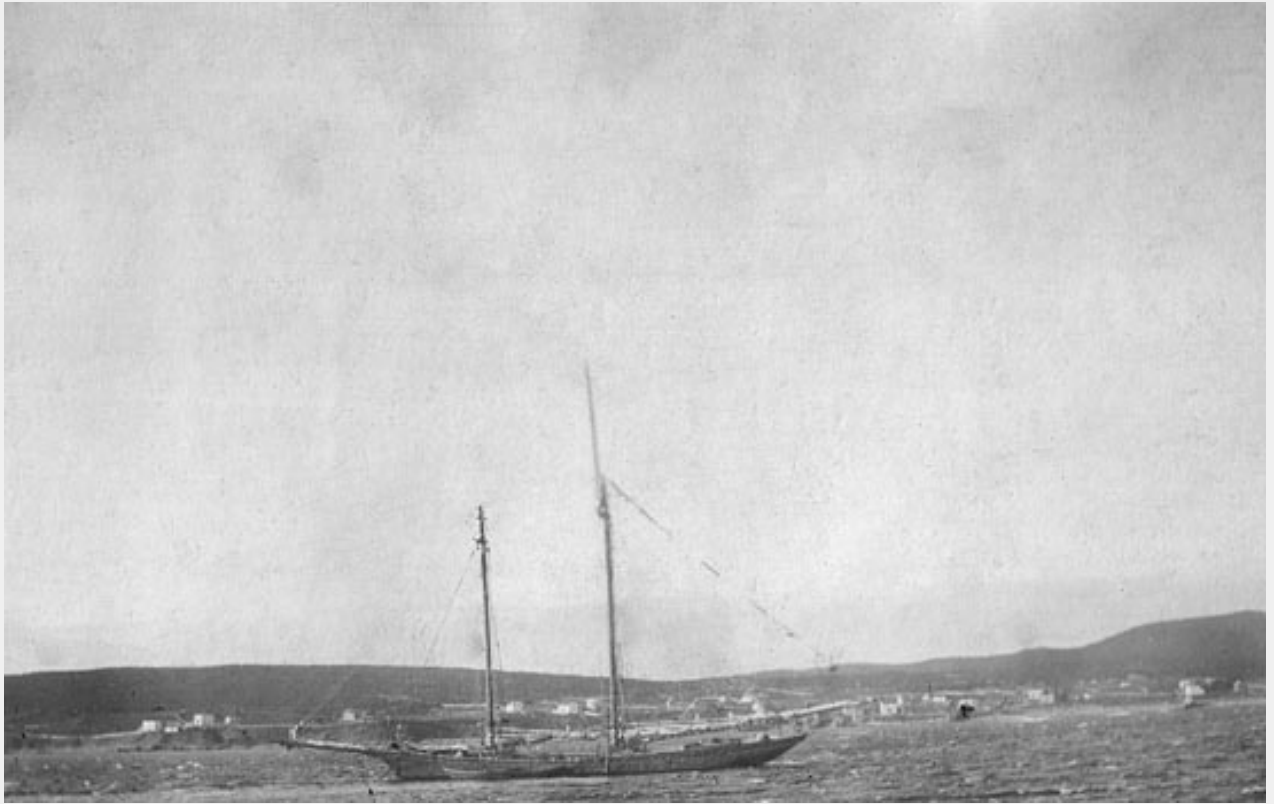
▼ 1907

- **25 July**—Letter authorizing unspecified repairs to light station for \$160.
Disk 2, RG26E23–DSCN2540

▼ 1908

- ▼ **20 August**—Report to LH Board that schooner *Electric Flash* ran into the SPLH in broad daylight, demolishing one of the station boats. The schooner then went immediately to sea. Cost to replace boat \$40.
Disk 2, RG26E48, File 2623–DSCN0196
Additional Notes:
Electric Flash, 53 Gross Tons, built 1869 at Vogler's Cove, NF. Electric Flash listed as total wreck off Renew's, NF, 1 Oct 1923, following major storm. Reported refloated 8 Oct 1923 and towed to St. John's.

NARA Research Summary— Combined



- 10 November—Owners of *Electric Flash* commission a new boat to be built as a replacement for boat destroyed when *Flash* collided with SPLH.
Disk 2, RG26E48, File 2623–DSCN0197
- 19 December—Owner of *Electric Flash* offers to replace the rowboat with a 14 1/2' peapod. Acceptance of offer recommended.
Disk 2, RG26E48, File 2623–DSCN0198

▼ 1912

- 11 September—Recommendation for repairs to caisson as done at Crabtree Ledge Light Station. Response at bottom dated 14 September requested diagram similar to that forwarded 8 October 1907
Scan-140519_0064

▼ 1914

- 22 May—Request from Bureau of Lighthouses to Lighthouse Inspector, Portland, to exhibit light from one hour before sunset until one hour after sunrise. Request for comments from shipping, masters, and other sources as to value of doing so.
Scan-140519_0009

NARA Research Summary— Combined

- **27 May**—Notice from inspector to keeper to initiate exhibition of light from one hour before to one hour after.
Scan-140519_0009
- **27 May**—Letter to Eastern Steamship Corp. from Inspector informing him of test and to ask their captains to comment on the benefits thereof.
Scan-140519_0009
- **22 June**—Letter appointing Charles Jewett as assist. keeper at SPL. Keeper Edward T Merritt resigned effective 1 July.
Scan-140519_0012

▼ 1915

- **8 May**—Letter to lighthouse inspector from Ingalls, Master, Tender Zizania, saying light test had no benefits because if you could see the light, you could see the tower.
Scan-140519_0009
- **2 April**—Letter noting keeper Jewett had been granted three month's leave without pay. Funds for position of laborer approved for three months at \$480/yr.
Scan-140519_0012
- **8 May**—Letter from master of Tender Hibiscus that test had no benefits.
Scan-140519_0009
- **11 May**—Letter from Captain, Coast Artillery Corps, that light test was beneficial.
Scan-140519_0009
- **19 May**—Letter from Eastern Steamship Corp stating that majority of captains thought test was beneficial.
Scan-140519_0009
- **20 May**—Letter from law firm representing the harbor that the test was beneficial and should be continued.
Scan-140519_0009
- **21 May**—Letter from pilots and mates association requesting test be continued.
Scan-140519_0009

▼ 1916

- **30 October**—Report of underwater inspection of caisson by diver.
Scan-140519_0064

▼ 1919

- **4 September**—Letter from Sup. stating that in view of reduced shipping and the additional costs involved, the practice of burning the lamp from one hour before to one

NARA Research Summary— Combined

hour after would be terminated. Note at bottom dated 19 September concurred and the practice was revoked.

Scan-140519_0009

- 26 September—Letter from Sup. to keepers to discontinue the test effective 1 October 1919.

Scan-140519_0009

▼ 1928

- 1 October—Personnel classification form for job description of Lighthouse Keeper Leroy Elwell, overwritten on identical form for Keeper Gus Wilson.

Disk 2, RG26E111-DSCN1587-1588

- 2 October—Personnel classification form for job description of Asst. Keeper Douglas Larrabee, also overwritten on identical form for Keeper Gus Wilson

Disk 2, RG26E111-DSCN1589/DSCN1590

▼ 1929

- 4 January—Form 80 proposal to strengthen foundation cylinder by renewing one and adding two new bands. Description of damage and proposed specification for repairs. References Drawing #244, which we have. Attached list of materials and estimated costs.

Scan-140519_0064

- 10 January—Letter from Act. Cmmsnr of Lighthouses to Sup. Portland, referencing 4 January Form 80 returning blue print to have new belts added for better visualization. Requesting details as to how voids in concrete would be filled. Form 80 held pending receipt of requested information.

Scan-140519_0064

- 17 January—Memo describing reasoning behind proposed technique for reinforcing caisson. Noted new belts left out of drawing so damaged and cracks could be more readily seen.

Scan-140519_0064

▼ 1931

- 7 July—Transmittal of data for NOTAM increasing candlepower from 530 to 1600 candlepower, red from 160 to 444 candlepower.

Scan-140519_0006

- 7 July—Form for increase in candlepower. Proposal to install “Aladdin” mantle lamp. Cost estimate attached.

Scan-140519_0007

NARA Research Summary— Combined

- **7 July—Data for notice to mariners regarding CP change.**
Scan-140519_0008
- **21 July—Transmittal of data for NOTAM showing candlepower increase to 2400 CP for white, 720 CP for red sector.**
Scan-140519_0005
- **21 July—NOTAM reporting characteristic change previous date, candlepower increased to 2400 candlepower, red to 721 candlepower**
Scan-140519_0005
- **22 July—Handwritten letter from Gus Wilson stating new lamp burned well on both nights and giving fuel consumption. Should work well if not disrupted by fog bell**
- **12 August—Request from Superintendent as to why lantern curtains were down while lamp was still lit and revolving**
Scan-140519_0004
- **14 August—Response from Gus Wilson stating he was on leave at the time and DL Larrabee was a good keeper who did his duties well**
Scan-140519_0004
- **17 August—Response from Superintendent that said assistant keeper didn't know what he was doing that morning as another Captain confirmed the light was lit while the curtains were down.**
Scan-140519_0004
- **8 December—Notice regarding installation of Aladdin lamp. Lamp will not be installed soon, if ever, and should be retained as a spare.**
Scan-140519_0005

▼ 1932

- **14 October—Form 80 proposal to install electric light and electrically operated fog bell at estimated cost of \$3200.**
Scan-140519_0063

▼ 1933

- **26 May—Letter to keeper Gus Wilson noting improved cleanliness and condition of station, Full leave privileges restored effective 1 June.**
Scan-140519_0010
- **27 May—Letter to keeper remarking on improvements to station during inspection and remarking on excessive absences, with warning.**
Scan-140519_0010

NARA Research Summary— Combined

- **14 July**—Letter to keeper warning against excessive absences to get mail and supplies.
Scan-140519_0010
- **28 August**—Letter from Asst. Sup. to District Engineer, U.S. Army, requesting a permit to lay a submarine cable from Fort Preble to SPLL. Series of blueprints attached.
Scan-140519_0060
- **30 August**—Letter from Asst. Sup. to Commissioner of Lighthouses requesting the bureau obtain permission from Sec of War for power line across Fort Preble.
- **7 September**—Letter from Acting Sec. of Commerce to Sec of War requesting permission to construct electrical lines across Fort Preble for electrification of lighthouses.
Scan-140519_0060
- **13 September**—Letter from Corps of Engineers granting a permit to lay and maintain a submarine cable from Ft. Preble to SPLL. Permit attached.
Scan-140519_0060
- **10 October**—Letter to Office of Sup. of Lighthouses that no response had been received regarding letter of 30 August requesting permit to run power lines across Fort Preble.
Scan-140519_0060
- **14 October**—Letter from Chief Engineer to Sup. Portland regarding necessity to get electrification of SPLL underway before cold weather and discussing the type of cable and lamps to be used.
Scan-140519_0061
- **1 November**—Letter to Sup. Portland from Chief Engineer enclosing blueprint for arrangement of apparatus for electrical installation. Wiring and control specifications. Handwritten annotations.
Scan-140519_0059
- **4 December** —Referencing letter accepting bid of Wm. Farrell for placement of riprap around lighthouse, amount of contract increased to \$6,000
Scan-140519_0058

▼ 1934

- **15 January**—Letter from Chief Engineer to Sup. Portland to consult with Fort Preble to determine what steps need be taken to remove military objections to power line.
Scan-140519_0046
- **18 January**—Letter from American Steel & Wire Co. that submarine cable was available for inspection on 48-hours notice.
Scan-140519_0046

NARA Research Summary— Combined

- **19 January—**Handwritten note to someone that cable was available for inspection.
Scan-140519_0046
- **Undated note from Sampson** that cable would be inspected Monday if ready.
Scan-140519_0046
- **19 January—**Letter to American Steel that someone would inspect the cable Monday, 22 January.
Scan-140519_0046
- **20 January—**Letter saying meeting was held with Ft. Preble and problems with cable No. 547 were resolved to the military's satisfaction. Military would recommend approval of the project.
Scan-140519_0046
- **23 January—** Letter from Acting Sec. of Commerce to Chief of Staff, War Department, that conference with Ft. Preble authorities had resolved issues with cable crossing Ft. Preble.
Scan-140519_0046
- **8 February—**Letter advising receipt of Form 80 request of 2 February for funds for riprap around SPLLT. Form 80 dated 2 Feb attached.
Scan-140519_0044
- **14 February—**Letter from electric company stating intent to extend electric line from Fort Road to Fort Wharf where submarine cable is to take off to the lighthouse.
Scan-140519_0033
- **20 March—**Form 80 request for funding for riprap around SPLL. Cost Estimate dated 2 February attached.
Scan-140519_0044
- **21 March—**Letter stating that bids had been opened for the construction of the aerial power line and submarine cable and were being held up by lack of permission from the military. Note dated 27 March states matter has been referred to the District Engineer.
- **26 March—**Form 80 request for riprap at SPLL returned without action, to be resubmitted when funds are available. Funding expected in near future. Handwritten annotation dated 13 April 1934 saying "Re-submit Form 80—Sufficient funds available."
Scan-140519_0044
- **3 April—**Letter requesting status of permission to cross Ft. Preble with aerial cable. Follow-up note at bottom dated 4 April.
Scan-140519_0046

NARA Research Summary— Combined

- **4 April—Letter from Sec. War to Sec. Commerce stating that the LS agreement to route cable beneath cable No. 547 removed their objections.**
Scan-140519_0046
- **9 April—Letter from Sec. of Commerce to Sec. of War, acknowledging letter of 4 April stating that placing the submarine cable beneath the War Department's cable No. 547 removed any military objections to the project.**
Scan-140519_0045
- **9 April—Letter from Chief Engineer to Sup. Portland that objections of War Department to laying of cable would be removed by placing the Lighthouse Service cable beneath War Dept. cable No. 547.**
Scan-140519_0046
- **12 April—Letter from Sup, to Sup. Portland that they had received informal information that application to fund the aerial power line across Ft. Preble was being approved.**
Scan-140519_0046
- **24 April—Letter returning Sup.'s Form 80, approving \$10,000 for placement of rip-rap and \$6200 for ice damage repair. Noted expense was not included in funds statement of 28 December (1933). Wants to know which items will be deferred to pay for the rip-rap and ice damage repair. Form 80 attached. Proposal No. 1918 attached "Specifications for placing additional riprap at Spring Point Ledge Lighthouse, Maine."**
Scan-140519_0044
- **27 April—Letter from Sec. of War to Sec. of Commerce granting permit for aerial lines and submarine cable across Ft. Preble.**
Scan-140519_0042
- **1 May—Letter from Gus Wilson to Sup. concerning chipping and repair of main gallery roof.**
Scan-140519_0043
- **3 May—Letter from Sup. to Commissioner of Lighthouses deferring certain maintenance projects in order to save enough money to place rip-rap around SPLL.**
Scan-140519_0041
- **5 May—Lighthouse Service order for newspaper advertising of opening for bids for placement of rip-rap around SPLL.**
Scan-140519_0041
- **7 May—Hand-drawn diagram of layout of submarine cable to SPLL and Portland Breakwater.**
Scan-140519_0027

NARA Research Summary— Combined

- **8 May**—Letter to Boston District Engineer from Sup. advising that laying of submarine cable had commenced on 30 April and was completed 2 May.
Scan-140519_0030
- **9 May**—Notice that advertisements for bids for placement of rip-rap were placed with several newspapers in Portland and Boston.
Scan-140519_0041
- **22 May**—Request for purchase of 2,500 net tons of rip-rap to be placed around base of SPLL. \$10,000 allocated. William R. Farrell of Boston was low bidder and received contract.
Scan-140519_0038
- **4 June**—Telegram to Sup. Portland from Putnam in Washington, DC, stating Form 97 repairs to SPLL have been approved. Handwritten note at bottom says “Ok, get busy.” Another says “contract being sent today.”
Scan-140519_0039
- **5 June**—Letter from Sup. to Wm. Farrell accepting his bid.
Scan-140519_0038
- **11 June**—Letter of transmittal of contract for rip-rap placement
Scan-140519_0038
- **28 June**—Letter from Sup. to Wm. Farrell authorizing him to proceed with rip-rap construction.
Scan-140519_0038
- **30 June**—Letter from Wm. Farrell acknowledging awarding of contract.
Scan-140519_0038
- **3 July**—Payroll report for completed work (6 July) laying submarine cable to lighthouses.
Scan-140519_0036
- **6 July**—Letter of transmittal to Farrell with copy of contract (not available to be included in scan)
- **7 July**—Letter from acting commissioner of lighthouses requesting information as to why the lighthouse, which was specified to have a lamp of 5400 candlepower wound up with 35,000 candlepower and a short flash duration of .3 seconds.
Scan-140519_0037
- **11 July**—Letter explaining reason for high candlepower output of SPLL. Extensive detail.
Scan-140519_0037

NARA Research Summary— Combined

- **18 July**—Letter acknowledging explanation and giving approval of change in lighthouse specification and characteristic. Keeper's position at Portland Breakwater eliminated and Breakwater operated through keepers at SPLL.
Scan-140519_0037
- **5 September**—Hand-written letter from Gus Wilson stating that at 1:30 in the morning the light went dead. He put the kerosene lamp in place while troubleshooting. Found light bulb burned out after only two nights in service.
Scan-140519_0031
- **30 October**—Payroll report for completed project wiring towers, connecting up apparatus, etc.
Scan-140519_0035
- **4 December**— Notice regarding filling out the combined monthly and fog signal report for Portland Breakwater.
Scan-140519_0026
- **21 December**—Keeper Larrabee reports in handwritten note that heavy winds the night before had blown the iron pipe chimney from its position and keepers were unable to repair it. Handwritten annotation indicates parts were ordered.
Scan-140519_0034

▼ 1935

- **5 November**—Letter to keepers from Sup. noting that entries showing keepers at Breakwater were not necessary, since both SPLL and Portland Breakwater lights were under the care of the SPLL keepers and presence at the Breakwater did not constitute an absence.
Scan-140519_0021
- **20 December**—Admonishment to supply details of boat parting her moorings and on stolen items from Portland Breakwater.
Scan-140519_0025

▼ 1936

- **1 January**—Response to letter of 20 December 1935 from Keeper Elwell. Boat got caught in ice and filled with water. Also articles were stolen from Portland Breakwater over a period of time; a wood axe and part of an electric lamp when workmen were tearing down buildings.
Scan-140519_0025
- **14 August**—Report on repair job on emergency power plant at lighthouse. Many handwritten annotations on letter
Scan-140519_0024

NARA Research Summary— Combined

- **19 August**—Note to keepers that they are to run the emergency generator for 15 minutes every week and report the results.
Scan-140519_0024
- **21 December**—Hand-written letter from Keeper Larrabee that storm of 20 December had dislodged some of the rocks from the rip-rap and endangered the electrical cable. Hand-written notation that cable was freed and out of danger.
Scan-140519_0030
- **27 December**—Report from Keeper at Portland Head that SPLL was showing a fixed light for a period the previous evening.
Scan-140519_0004
- **29 December**—Letter from Asst. Supr. asking why the light was showing a fixed light on the 27th.
Scan-140519_0004
- **28 December**—Hand-written letter from Keeper Larrabee explaining that lens had been jarred off position by the operation of the fog bell apparatus. Ball bearings had to be replace and lens re-leveled before restoring operation.
Scan-140519_0004
- **31 December**—Letter from Keeper Larrabee explaining why he hadn't sent a written report of light outage as required. Excuse was he had left the letter with his wife to mail.
Scan-140519_0004
- **31 December**—Keeper Larrabee advises Sup. that remaining stones dislodged from the rip-rap by the storm had fallen to a position below high water, allowing access by the sea to the smaller stones now in danger of being washed away.
Scan-140519_0030

▼ 1937

- **1 March**—Request from Keeper Larrabee for tender to lay a mooring at the station to secure the boats when the wind did not allow the boat to be put on the davits.
Scan-140519_0023
- **14 August**—Report that generator was satisfactorily run for 15 minutes.
Scan-140519_0024
- **11 October**—Letter to Sup from keeper DL Larrabee stating light failed to show proper characteristic due to clock chord pulling out of the drum. Blamed on some keeper previously reeving a new cord and failing to tie a proper knot in its end. Hand-written annotation "Poor excuse."
Scan-140519_0004

NARA Research Summary— Combined

- **2 December**—Letter admonishing keepers after and inspection that presence at the Breakwater constituted an absence from SPLL and must be reported as such. Requested explanation.
Scan-140519_0021
- **3 December**—Letter from Assist. Keeper Lester W Davis that lens had stopped rotating due to bearings sticking from dust and congealed oil. Cleaned and restarted.
Scan-140519_0004
- **7 December**—Request from Supr. for explanation of why bearings were not cleaned before the lens stopped and asking where the keeper was.
Scan-140519_0004
- **7 December**— Letter to Sup. from Keeper Larrabee explaining circumstances of absences and pointing out that letter from Sup. dated 5 November 1935 relieved them of reporting such absences.
Scan-140519_0021
- **7 December**—Acknowledging receipt of report of loss of skiff #194 and one pair of 7-foot oars. Report being held pending details of loss.
Scan-140519_0022
- **10 December**—Letter detailing loss and recovery of skiff #194 and circumstances of its loss after being struck by a fishing boat.
Scan-140519_0022
- **10 December**—Response from DL Larrabee explaining why the lens bearing failed.
- **11 December**—Letter from Sup. accepting the keeper's explanation and reinstating the policy of reporting all absences, including maintenance visits to Portland Breakwater.
Scan-140519_0021

▼ 1938

- **20 August**—Request for assistance of the tender to change the mooring, which was waterlogged and loaded with kelp such that the keepers could not handle it.
Scan-140519_0019
- **21 September**—Report that dory was again run over by a boat and set adrift. Boat recovered next day by a fisherman with no damage or loss of property.
Scan-140519_0029
- **19 September**—Series of handwritten notes regarding loss and recovery of boat number 176 after being cut free by a passing fishing boat. Recovered at Portland Head.
Scan-140519_0020

NARA Research Summary— Combined

- **17 October**—Letter from Keeper Larrabee stating that lens had stopped rotating for 30 minutes previous night due to being jarred off its bearings by the fog bell apparatus.
Scan-140519_0004

▼ 1939

- **17 May**—Hand-written memo from Larrabee (?) stating that Ft. Preble permit for the overland electrical cable had expired and needed to be renewed immediately.
Scan-140519_0018
- **19 May**—Letter from Sup. to Commissioner of Lighthouses that the renewal was needed and Ft. Preble had no objections to the renewal. Proposal to eliminate the 5-year renewal cycle and make it ongoing. Copy of original permit attached.
Scan-140519_0018
- **14 June**—Letter to Sec. of Commerce from Sec. of War granting renewal for another 5 years.
Scan-140519_0018
- **1 September**—Correspondence from Keeper Larrabee that bright sun heats up the lantern to such an extent that expansion of the metal in the clock prevented the lens from rotating. In that case, the keepers had to turn the light off and put up the curtains. Hand-written annotation stating it was not necessary to operate the light in bright daylight anyway.
Scan-140519_0004
- **22 September**—Letter reporting light was showing fixed light while repairs to bearings and re-leveling of the apparatus was accomplished. Blamed on same problem as previously explained.
Scan-140519_0004

▼ 1940

- **15 January**—Report of lost property after dory is swept from rear hook during a storm and some equipment was lost. Hand-written notation blaming keepers for not hoisting boat far enough out of the water.
Scan-140519_0017
- **19 January**—Letter from Sup. requesting more information on why boat was not hoisted higher.
Scan-140519_0017
- **22 January**—Letter to Sup. from Keeper Larrabee explaining circumstances of boat damage.
Scan-140519_0017

NARA Research Summary— Combined

- **26 January**—Letter from Sup. admonishing keepers to exercise reasonable actions to prevent damage of government property.
Scan-140519_0017
- **9 April**—Letter to keeper sending them a warning sign to be posted at Portland Breakwater and directing the keepers to watch for any attempts to vandalize the light.
Scan-140519_0015
- **14 June**—Letter assigning three additional unmanned lights to the keepers at Spring Point.
Scan-140519_0016
- **5 July**—Request for issuance of an outboard motor to aid keepers in maintaining all the additional lights assigned to the station.
Scan-140519_0028
- **8 July**—Request denied.
Scan-140519_0028

▼ 1950

- **12 July**—Title page of inspection report
- **24 July**—Inspection report showing light station deficient in almost every measure
- **26 July**—Transmittal letter for inspection report
- **Undated**—Followup inspection report
- **4 August**—Report that deficiencies at the station had been fixed
- **9 August**—Response requesting a work order be issued to accomplish repairs
- **1 September**—Letter outlining corrections to deficiencies

▼ 1951

- **27 April**—Commander 1st CG District requests to change the lamp type in the 5th order lens at SPLL
Present lamp is 200W, 125V, clear, C-7A filament. Light is flashing white with 2 red sectors, 5.0 seconds, flash 0.5 seconds, eclipse 4.5 seconds, 35,000 candlepower white, 8,000 candlepower red
- **27 April** —Attached invoice with cost estimate of lamp change
- **21 May**—Notification that 150 W lamp proposed is no longer manufactured. Suggestion for replacement lamp.

NARA Research Summary— Combined

- 4 June—Letter stating great improvements to light station since Pollie, BM2 was assigned as OIC. Small boat considered surplus to station needs due to breakwater. Once breakwater is completed, station can be made unattended and light and fog bell monitored and controlled from Portland Head Light Station.
- 5 June—Power cable out of commission due to being crushed by a rock from the breakwater. Two emergency generators on station.
- 7 June—Message that lamp change was expected to take place 14 June.
- 8 June—Repairs to power cable complete
- 8 June—Teletype message that repairs to power cable completed
- No date—Teletype message that lamp is to be changed 14 June
- 12 June—NOTAM regarding lamp changeover , with annotations
- 14 June—Teletype message that change over is occurring tonight
- 15 June—NOTAM that change is effective 14 June
- 30 June—Lamp change approved
New candlepower is 45,000 white, 10,000 red. Lamp is 250 watt, 115 volt, c-7a filament G-30 clear lamp

▼ 1952

- 4 April—NOTAM regarding white and red sector degree changes

▼ 1958

- 4 November— Memorandum of cost estimate for converting SPLL to automatic unattended operation.
- 6 November—Civil Engineering Structuralt requesting authority to convert station to unattended status. Attached sheets containing equipment requirements and cost estimates and some procedural items.
Scan-140519_0057
- 12 November—Aids To Navigation Operation Request, outlining importance of light, suggested reduction in candlepower.
Scan-140519_0056
- 11 November—First Endorsement of CCGD1, recommending change in timer to be used on flasher, installation of electric bell striker with second placed in watch room as spare,

NARA Research Summary— Combined

requisition for cable in stock, procedures for personnel allowances, publication in NOTAMs, language to be used in describing changeover, cost assignment.

Scan-140519_0056

▼ 1959

- **15 January—Approval of First Endorsement of CGD1.**

Scan-140519_0057

- **15 April—Work order 60-3275 for conversion of station to unattended operation. Request for procurement of submarine cable, bell striker assembly, and lamp changer. Total \$3,000. Approved 29 December 1959**

Scan-140519_0054

▼ 1960

- **28 January— Letter from Chief, Electronics Engineering Section, to Asst. Chief, Civil Engineering Section, referencing upcoming work order for conversion of SPLL to automatic operation and regarding telephone cable for control and monitoring. Specifications.**

Scan-140519_0053

- **15 March—Letter from CO, Base So. Po, to Commander, 1st District, that new light would be placed in service on or about 19 May 1960. Attachment Change in Obligation or Expenditure. Explanatory note regarding change in candlepower. Ref. Work Order 60-3275.**

Scan-140519_0051

- **23 March—NOTAM re: change in candlepower of SPLL to 18,000 candlepower white, 4,000 candlepower red. Period of flash changed to 1.2 sec. Also, notice of change to automatic operation.**

Scan-140519_0049

- **29 March—NOTAM announcing SPLL will be converted to automatic operation and resident personnel will no longer be in attendance.**

Scan-140519_0049

- **30 March—Letter SPLL Station change of operational status and recommendation for personnel allowances.**

Scan-140519_0055

- **31 March—Letter advising resident personnel should remain on station for two weeks following conversion to monitor automatic operation. Requesitng list of all furniture and equipment for disposition.**

- **31 March—Letter from 1st CG District to OIC, Portland Head Light Station, that a work order was issued to convert SPLL to automatic operation on 19 May and that**

NARA Research Summary— Combined

responsibility for fog signal watch and monitoring of SPLL would be theirs. Assigned responsibility for maintenance and servicing to CG Base, South Portland.

Scan-140519_0049

Scan-140519_0055

- **31 March**—Revision to Work Order 60-3275 Spring Point Ledge Light Station Change A specifying procedures and equipment to be used to convert the station to automatic operation. (3 pages)
Scan-140519_0052
- **1 April**—Letter approving change of status of SPLL to automatic operation on 19 May and requesting recommendations for changes in personnel be made the subject of separate correspondence.
Scan-140519_0055
- **3 June**—Authorization to transfer the remaining two keepers: Merrick, Lee to Cape Elizabeth LS, and Conner, Edward T, Jr. to Fletcher's Neck LB Station. Base SoPo would provide a boat on 10 June for removal of furnishings.
Scan-140519_0055
- **13 June**—Telex stating SPLL Station automatic operation satisfactory. Response to evaluation of automatic operation prior to removal of personnel.
Scan-140519_0055
- **19 June**—Letter advising station has been disestablished effective 19 May and personnel have been removed. Disposition of unnecessary equipment is being effected.
Scan-140519_0055
- **15 September**—Letter to Commander, 1st CG District that emergency standby generator failed to start automatically during Hurricane Donna due to dead battery. Clarified fix to be made and who was responsible for maintenance of the generator.
Scan-140519_0050

▼ 1962

- **29 January**—Letter from Commander, 1st CG District to Commandant (CPI) answering request for historical information on five bells. Paragraph B states that the 1897 Blake Bell Company bell was removed from SPLL when the station was automated in 1960. A spare bell operated by an electric striker was installed during conversion. This report is in error. The original bell remains on the lighthouse.
Scan-140519_0048
- **21 September**—Notice that lamp would be changed at SPLL increasing to 20,000 candlepower white, 4,400 cp red. Specification attached.
Scan-140519_0047

NARA Research Summary— Combined

- **10 October—NOTAM saying that SPLP candlepower would be increased effective 1 November.**
Scan-140519_0047
- **7 November—NOTAM reflecting increased candlepower now in effect.**
Scan-140519_0047

▼ Undated

- **List of keepers since 1902**
Scan-140519_0011
- **5 March (No year)—Handwritten memo that electric company was sending a trouble shooter out to check on transformers.**
Scan-140519_0032
- **7 March (No year)—Same handwritten memo states cable defective under stone rip-rap at base of the tower possibly dislodged by ice flow and falling on cable. Cable repaired and switched back to commercial service at 7:00 pm.**
Scan-140519_0032